



L SERIES

MEETS CURRENT EPA FIELD CERTIFICATION STANDARDS (2008)



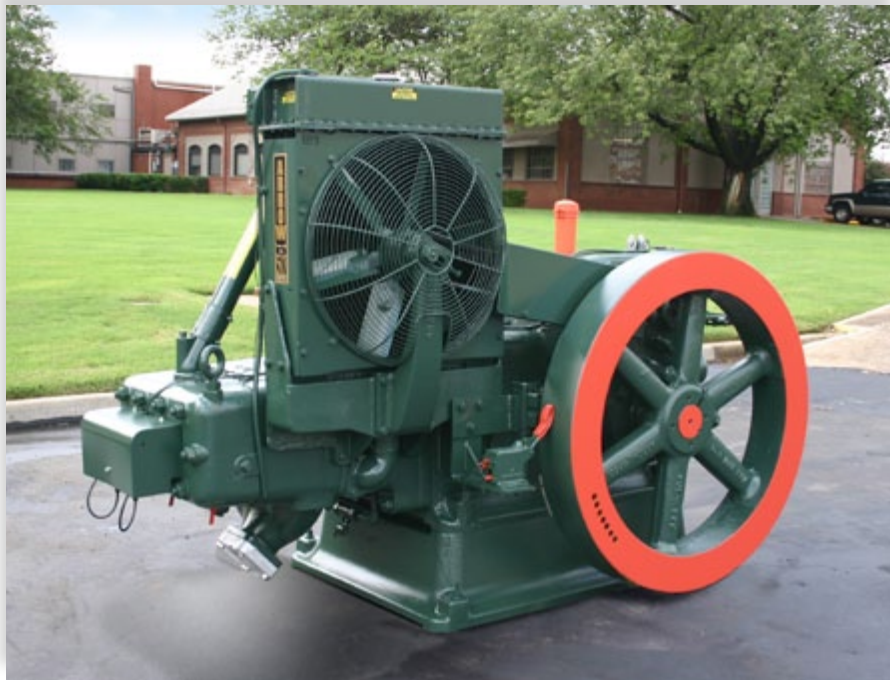
ARROW
ENGINE COMPANY



a TRIMAS company

L-795-ML-B-APR12

L-SERIES 795 GAS ENGINE



The Arrow L-Series 795 engine is a low to medium speed, heavy duty, twin cylinder, two cycle horizontal type gas engine. The two cycle engine completes its work cycle of compression, ignition, power and exhaust in two strokes or one revolution of the crankshaft. The L-Series uses two cylinders, therefore, there are two power strokes for each revolution of the crankshaft. Call Customer Service at 1.800.331.3662 for more information and prices.

- 35 hp to 65 hp
- Use in place of DP60 and DP80
- All Replacement Parts Available
- Factory Warranty

L-Series 795 Gas Engine

LUBRICATION

Full pressure lubrication with a gear driven oil pump and a full flow replaceable oil filter assures engine longevity. Oil can be added through our unique oil filter while the engine is running. There is also a sight glass for checking the oil level while the engine is in operation. In 2 cycle models, an additional lubricator is provided for longer cylinder and ring life.

SAFETY CONTROLS

Safety controls are standard and provide engine shut-down preventing damage caused by low oil pressure, low water level, and on 2-cylinder models, an overspeed switch is standard.

CARBURETION

All engines have instantaneous governor adjustments to maintain a constant engine RPM. Impco style carburetors are standard on all Arrow engines.

COOLING SYSTEM

Standard on all C-Series engines is closed pressure condensing cooling systems. Thermo-syphon cooling is standard on all L-Series engines.

MAIN COMPONENTS

The connecting rods are saddle mounted to the crosshead pin for more bearing surface. All models utilize an exhaust pipe flange to eliminate exhaust pipes stuck in cylinder heads.

STARTING

All engines utilize an easily accessible compression release to facilitate starting. Manual cranks, portable electric starters and 12V built-in ring gear starters are standard on all C-series engines: 12V ring gear starters or air gas starting are available on L-795 engines.



SPECIFICATIONS

Model

Rated continuous HP
at max continuous RPM

Bore & stroke (mm)

Displacement (liters)

Compression ratio

RPM range

WR² (Kg-M2)

P.T.O. shaft size (mm)

Oil capacity (liters)

Water capacity (liters)

Spark plug size

Exhaust connection

Fuel gas pipe size

Mounting bolts: no./size

Shipping weight (kg)

Truck load quantity

Safety controls

Ignition

Fuel

Fuel system

Lubrication

Filtration - oil

Clutch - P.T.O.

Starting equipment

2 CYCLE ENGINE

L-795

65 HP

600 RPM

45 KW

7 1/2"x9"

(190.5x228.6)

795 C.I. (13.0)

5.3:1

300-600

1750

3" (76.2)

7 gal.* (26.5)

14 gal. (53)

7/8"-18

1" NPT

4-1"

4500 (2041)

10

Standard: water level, oil temperature, oil pressure & overspeed

Solid state standard

Gaseous

Impco type carburetor

Full pressure

Replaceable - full flow filter

SPE-114-P1

12-volt or Air valve std. Air motor opt.

*For oil filter changes add 2 qts.



L-Series 795 Gas Engine

ARROW AUTO START SYSTEM

Automate your L-Series engine with the Arrow Auto Start System. In addition to being the most cost effective system with the best value per dollar cost, the Arrow Auto Start System is backed by a 1-year factory warranty as well.



- Oil circuit integrity
- Continuous monitoring
- Start attempt counter
- Automatic start-up sequence
- Automatic ON/OFF cycle timing
- Automatic engine shutdown



ARROW MANUFACTURED
**REPLACEMENT
PARTS**

Caterpillar® Engines

G379 G3304
G398 G3306
 G399

Waukesha® Engines

F2895 P9390
F3521 145G/F817
F5108 140G/F554
L5790 WAK/1197
 L7042

Fairbanks Morse® Engines

ZC-118 ZC-503
ZC-208 ZC-739
 ZC-346

Ajax® Engines

5 x 6½
EA-22, 6½ x 8 CMA
EA-30, 7¼ x 8 CMA
E-30, 7½ x 10 CMA
E-42, 8½ x 10 CMA
DP-60, 9½ x 10 CMA
DP-70/80/160, 11 x 14 CMA
DP-115/230, 13¼ x 16

Piston & Rod Assemblies
180
360
600
800

Waukesha®, VHP®, and VGF® are registered trademarks of Dresser Industries, Inc., Caterpillar®, is a registered trademark of Caterpillar, Inc., Fairbanks Morse® is a registered trademark of Coltec Industries, Inc., and Ajax® is a registered trademark of Cameron International Corporation.

OEM

C-Series

*C-46 *C-96
*C-66 *C-101
*C-106 *C-255

VR-Series

VR-155 VR-310
VR-220 *VR-330
VR-232 *VR-330CF
*VR-260 VR-265
VR-283 *VR-380

A-Series

*A42 *A54 *A62

K6 Slow Speed Engine

*

Lufkin Engines

L-333 L-1770
*L-795 L-2165

Witte Engines

98 E15 F32
B12 E20 F42

Arrow Chemical Pumps

* 10 Series (beam operated)
* 12 & 13 Series (pneumatic)
* 430 Series (electric)
* 500 & 510 Series (pneumatic)
* Solar Chempump

Gas Compressors

* *VRC-2 *VRC-CNG

Gas Products

* Volume Tanks
* Vertical & Horizontal Separators
* Suction Scrubbers
* Meter Runs
* Coalescers
* Skids



ARROW ENGINE COMPANY

2301 East Independence
Tulsa, Oklahoma 74110

toll free 800 331-3662

local 918 583-5711

toll free fax in US & Canada 800 266-1481

fax 918 388-3202

www.arrowengine.com

copyright Arrow Engine

* Products currently manufactured by Arrow Engine Company & owned as OEM