



Type C

# Straight Centrifugal Pumps



*The Type C Pump is a compact, horizontal, single stage, centrifugal pump close-coupled to an electric motor.*

*The removal of readily accessible bolts (back pull-out construction), permits the removal of the pumping element, exposing the impeller and seal for inspection, without disturbing the piping.*

## APPLICATIONS

■ General farm or home irrigation, air conditioning and refrigeration

## SPECIFICATIONS

**Body and Base** – Gray cast iron

**Bracket** – Cast iron

**Impeller** – Silicon bronze

**Shaft** – Threaded stainless steel

## FEATURES

**Flow Rates** – To 160 U.S. gallons per minute.

**Discharge sizes** – 1-1/4" through 2".

**Temperature** – Applications up to 200°F.

**Manufacture** – Carefully manufactured with materials best suited for water pump applications assures a unit with long life and dependability.

**Bracket** – Sturdy cast iron bracket houses seal and maintains positive alignment between motor and volute case.

**Volute Case** – Precision machined gray cast iron, with NPT tapped openings for suction and discharge. Standard discharge position is horizontal, as pictured. Volute may be rotated for vertical-up discharge.

**Impeller** – Enclosed multi-vane silicon bronze impeller is balanced to eliminate vibration and provide smooth, quiet operation. Impeller is threaded on motor shaft for positive alignment.

**Shaft Seal** – Self-adjusting, water-cooled, mechanical shaft seal prevents leakage and eliminates need for drain piping. Run-in and periodic adjustment is not required.

**Motor Shaft** – Stainless steel shaft is threaded for direct mounting of impeller. Shaft extension to impeller is short to increase shaft rigidity and to extend bearing life.

**Motor** – Heavy-duty, 3 HP, flange-mounted, motor designed for continuous 3600 RPM operation. Two ball bearings are permanently lubricated, eliminating the need for re-lubrication service. Open, drip-proof enclosures are standard. All models can be furnished with either single-phase (230V) or three-phase (230/460) motors. Totally enclosed fan-cooled motor is available for three-phase power.

## ORDERING INFORMATION

Model Number	HP	Catalog Number	Phase	Volts	Suct.	Disch.	Approx. Wt. Lbs.
C1-1/4TPMS	3	B53602S	1	230	1-1/2"	1-1/4"	55
		B53603S	3	208/230/460			
		B53603SMS2	3	575			
C1-1/2TPHS	3	B59212S	1	230	2"	1-1/2"	56
		B59213S	3	208/230/460			
		B59213SMS2	3	575			
C2MPS	3	B53616S	1	230	2-1/2"	2"	58
		B53617S	3	208/230/460			
		B53617SMS2	3	575			

BERKELEY® is a registered trademark of Pentair Water.

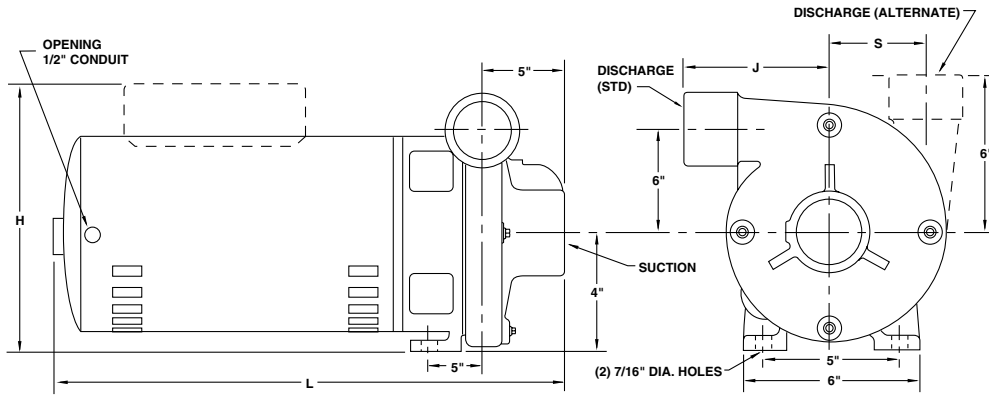
In order to provide the best products possible, specifications are subject to change.



Type C

# Straight Centrifugal Pumps

## OUTLINE DIMENSIONS



Dimensions (in inches) are for estimating purposes only.

## DIMENSIONAL DATA

Model Number	HP	Suction (NPT)	Disch. Phase	H*	J	K	L*	S	M
C1-1/4TPMS	3	1-1/2	1-1/4	9-1/4	5	2-1/2	16-15/16	3-5/16	1-7/8
C1-1/2TPHS	3	2	1-1/2	8-1/4	5	2-11/16	17-1/4	3-1/2	2
C2MPS	3	2-1/2	2	9-1/4	4-7/8	2-5/16	17-1/4	3-1/16	2-7/16

\*Overall height (H) and length (L) are shown for single phase motors. Three phase motors are slightly smaller. Dimensions are for estimating purposes only.

## PUMP PERFORMANCE

